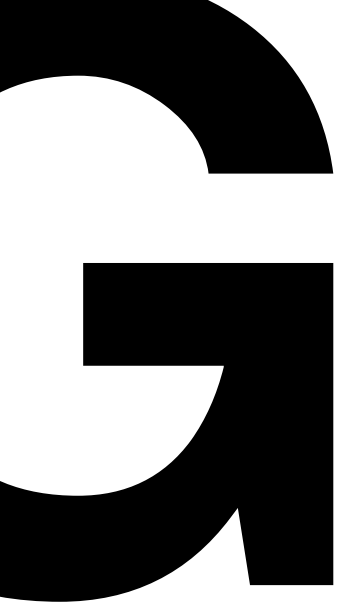


Gianny Baidal



interior architecture + design



{ interior architecture + design (portfolio)

{

Gianny Baidal

“ as a designer I am the synthesizer of people, their culture and their needs ”
_ this is my reason

[Function





Beauty]

this is my story | **design is my poetry ***

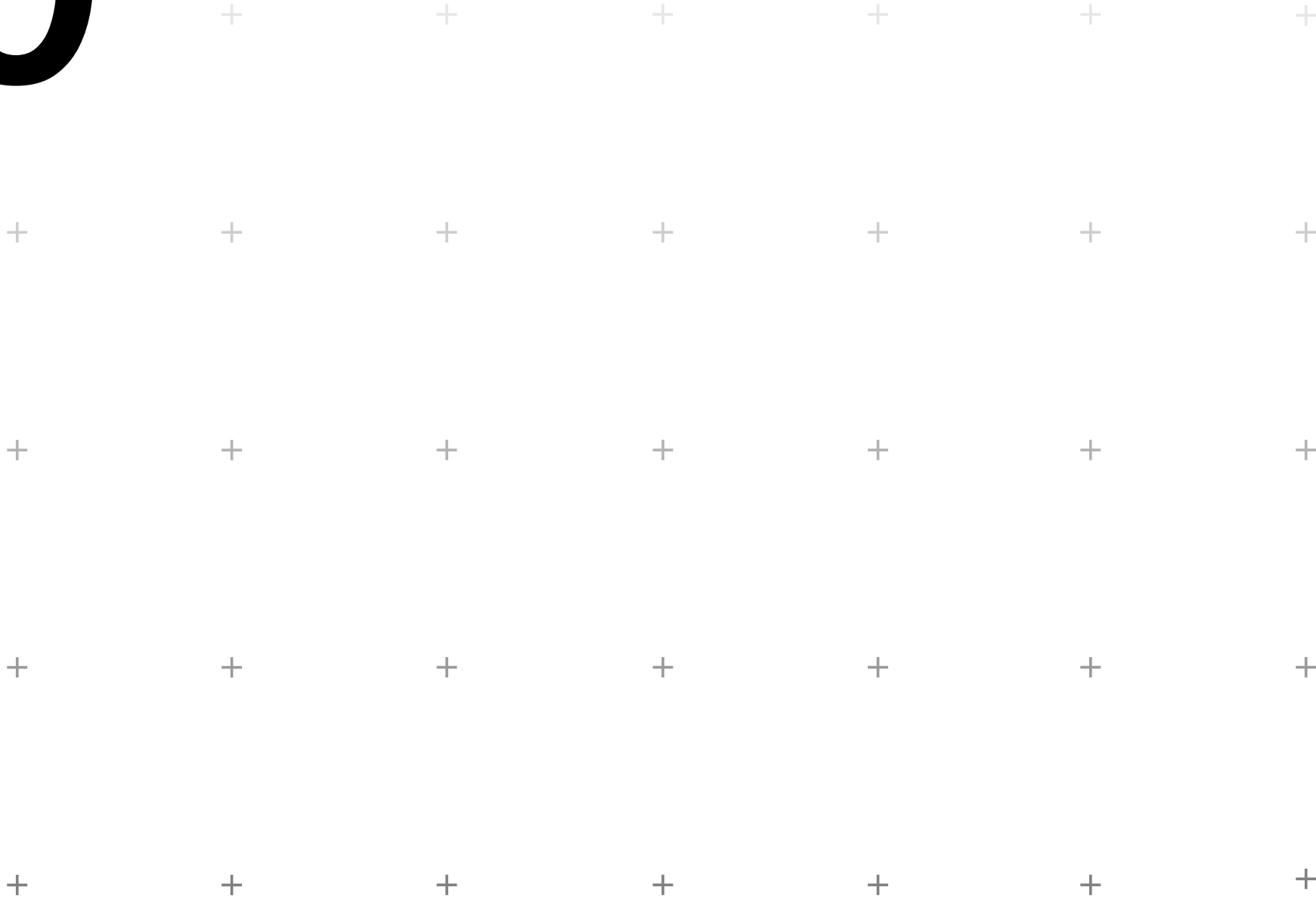
Expression is the medium of my sanity, through art
and design it finds a way out to the canvas of life.

“ everything I design needs to function and be beautiful ”
_ this is my mantra

0.0

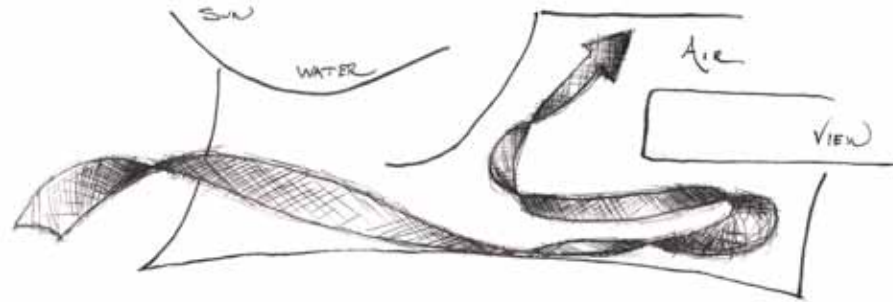
{ interior architecture + design (portfolio)

Gianny Baidal

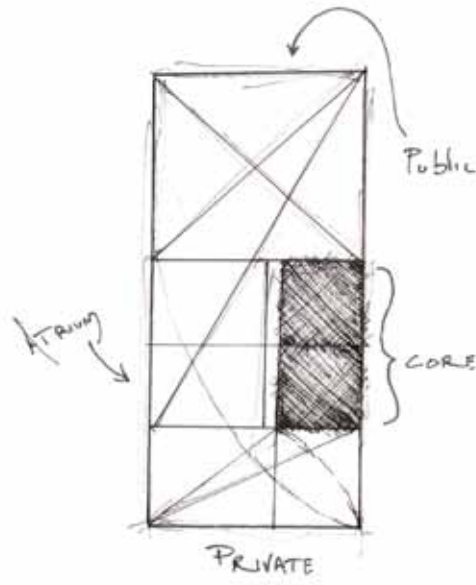
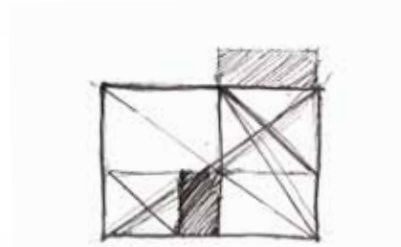


| | |
|----------------------------|---------|
| sustainable | 5 – 14 |
| pool house | 15 – 20 |
| kitchen design | 21 –22 |
| bath design | 23 – 24 |
| rooftop garden | 26 – 28 |
| | |
| furniture design | 29 – 30 |
| architectural illustration | 31 – 32 |
| digital media | 33 – 34 |

0.1



concept sketches



program

To create a single family townhouse design of 6 units at a maximum of 2,500 sq. feet each. The design takes place on San Francisco's Pier 70.

design solution

A design that takes the surrounding industrial area as inspiration and displays an array of green building systems **to create a case study for how a home should function.**

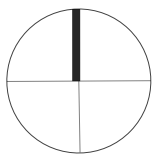
“ as designers we are optimistic problem solvers, sustainable design is an issue worth solving ”

Sustainable



sustainable design

0.6



layout

“ natural light + indoor air quality are pivotal ”

An open plan is used to make the narrow residence appear bigger, but equally as important is its function to increase natural light distribution and air ventilation + quality.

roof design

“ the roof design is governed by function ”

Angled to position the photo voltaic panels at their most optimal position creating a V-shape to collect rainwater.

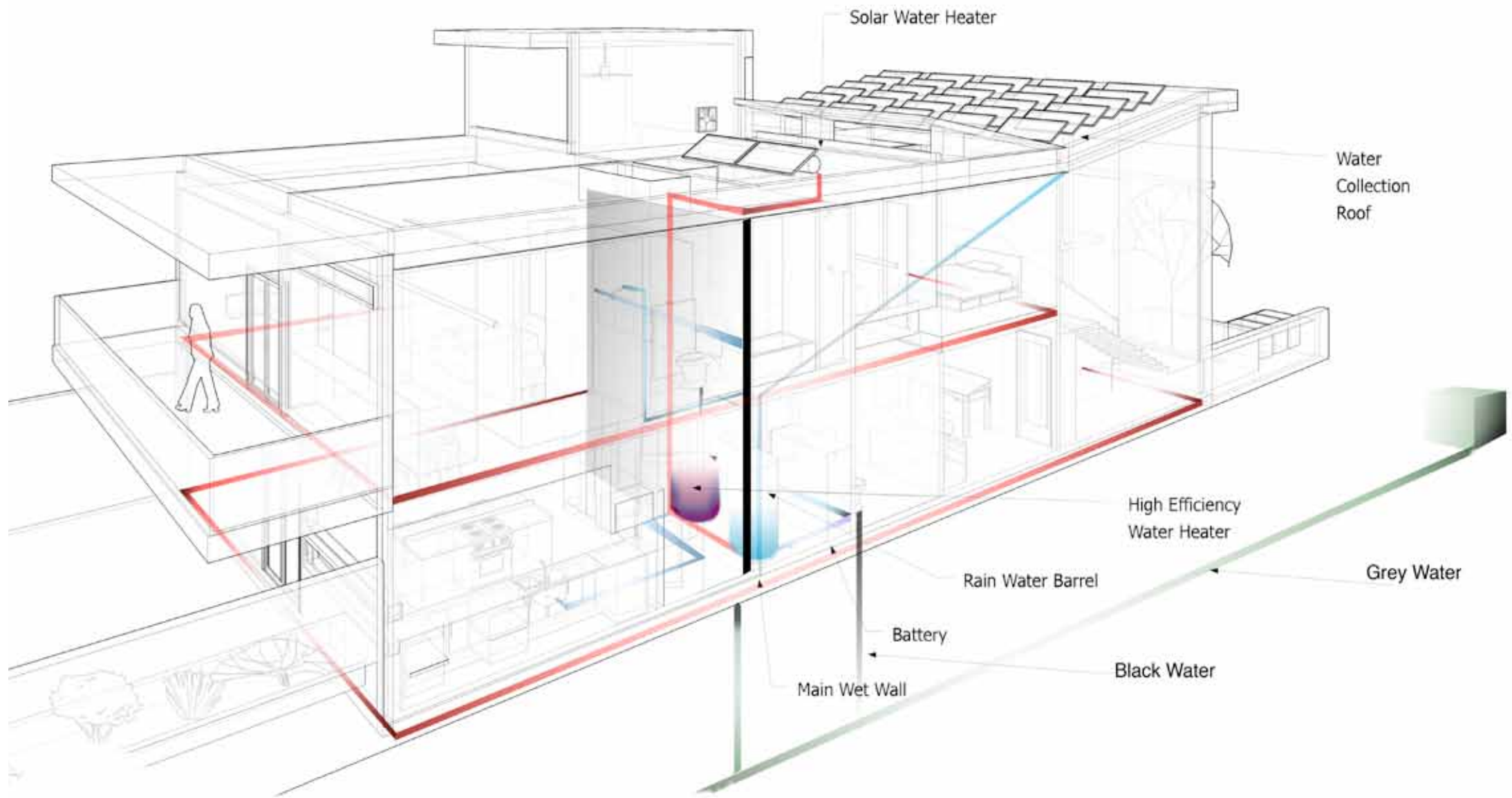
plumbing design

“ the plumbing design is the life blood of the structure ”

There is only one main wet wall connecting all of the bathrooms, the kitchen and utility room. This water system is connected with the rainwater catchment, radiant floor heating and grey water system.



townhouse facade



winter day

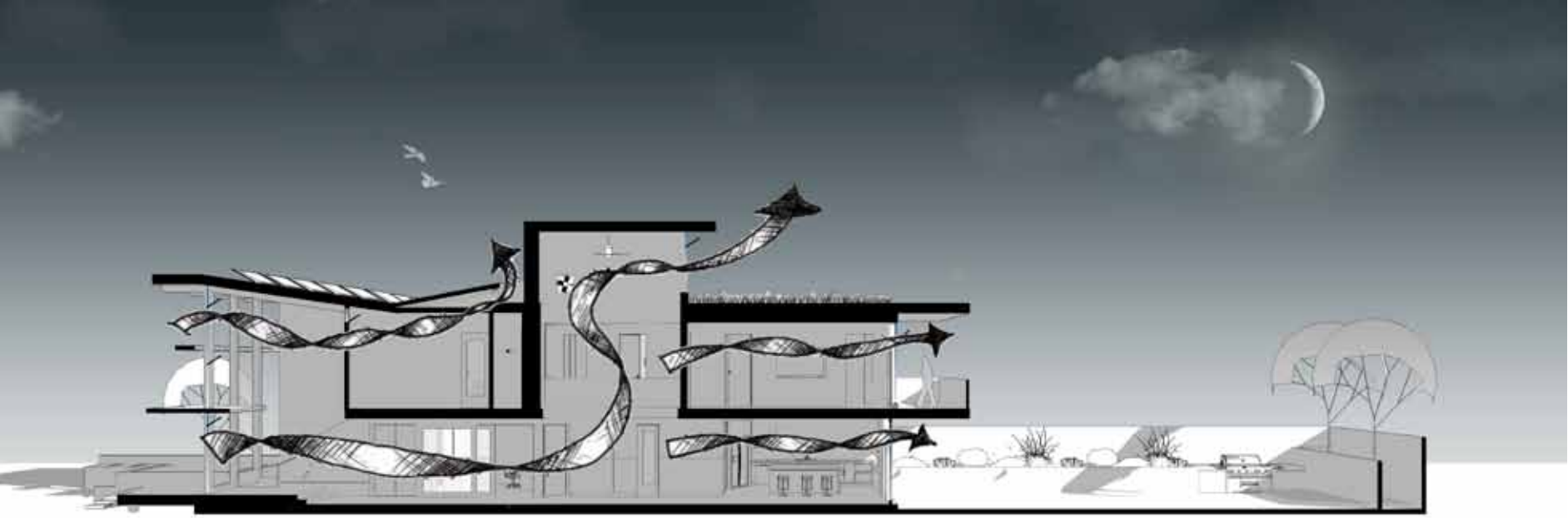


summer day

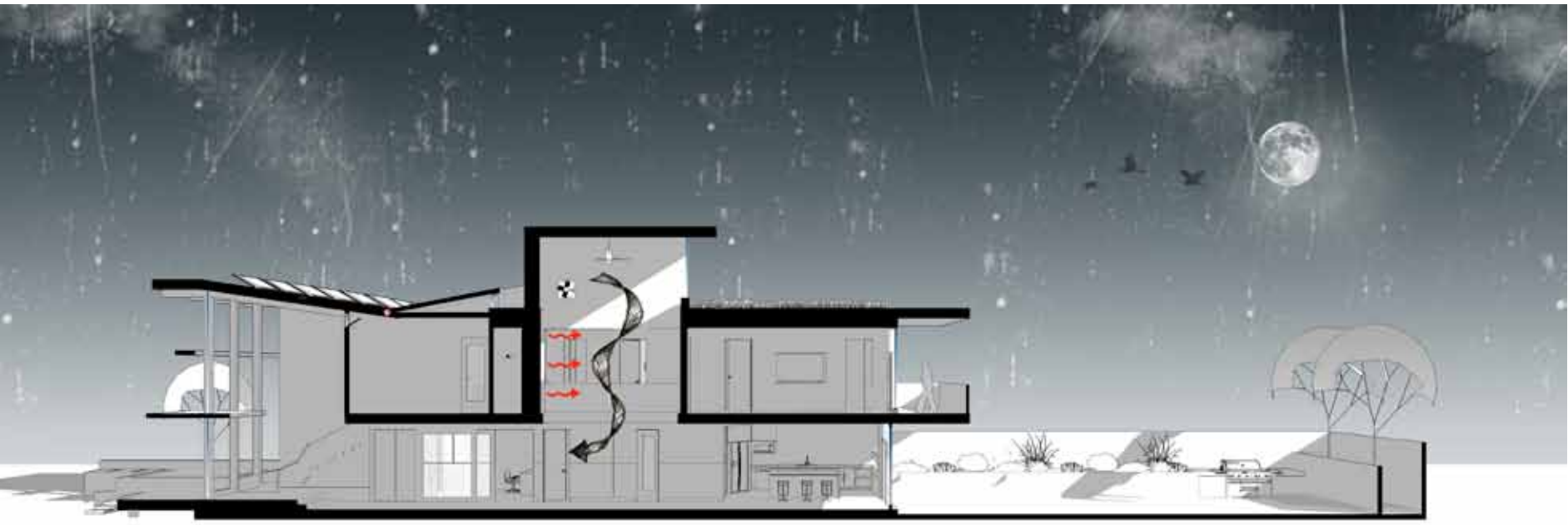


[bioclimatic sections]

summer night



winter night





materials + products

Factories and industrial materials were kept in mind when selecting materials such as brick, steel and glass aside from more sustainable materials to create a unique design with a sense of place. Furniture selections carry out a horizontal emphasis pushing the illusion of depth and space.





kitchen { 3dsMax

kitchen design

The layout of the kitchen invites connection and interaction with the rest of the spaces and its users. Special attention was placed on appliances along with material selection.



dining { 3dsMax



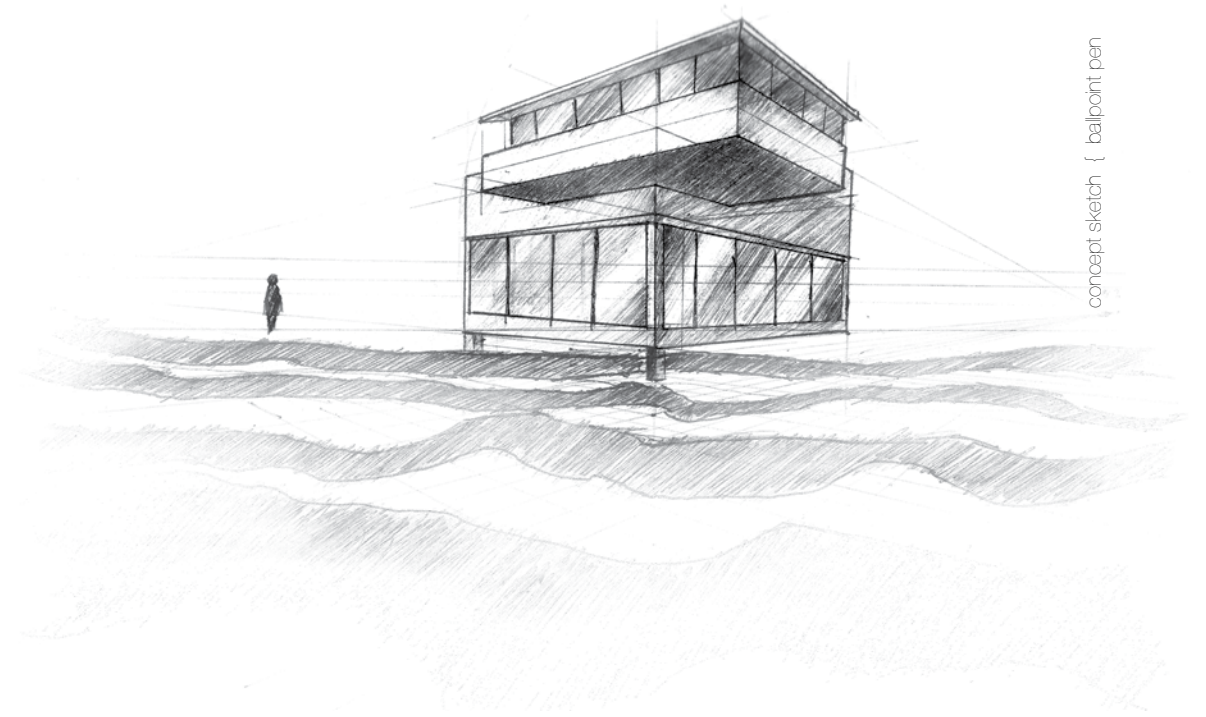
0.2

program

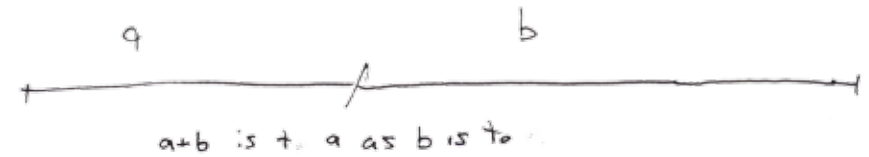
To create a guest + pool house less then 1200 sq. feet located on a Los Angeles cliff side with views to the ocean. Clients wanted a modern design that related to their adjacent craftsmen residence.

design solution

Respecting views + sun orientation and driven by a geometric grid to create rhythm, harmony and proportion this design mixes modern simplicity with craftsmen detail.

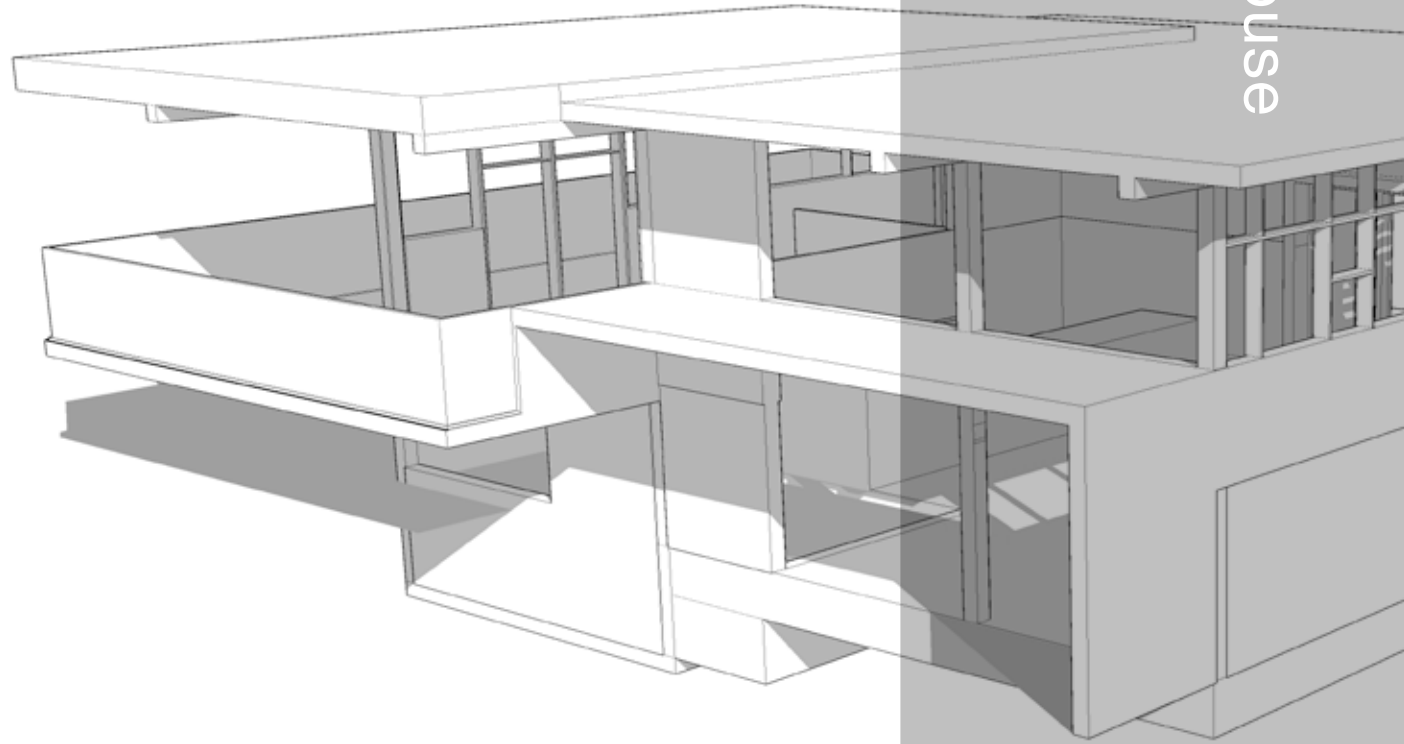


concept sketch { ballpoint pen



$$\frac{a+b}{a} = \frac{a}{b} = \varphi$$

$$\varphi = \frac{1 + \sqrt{5}}{2} \approx 1.618$$



pool house

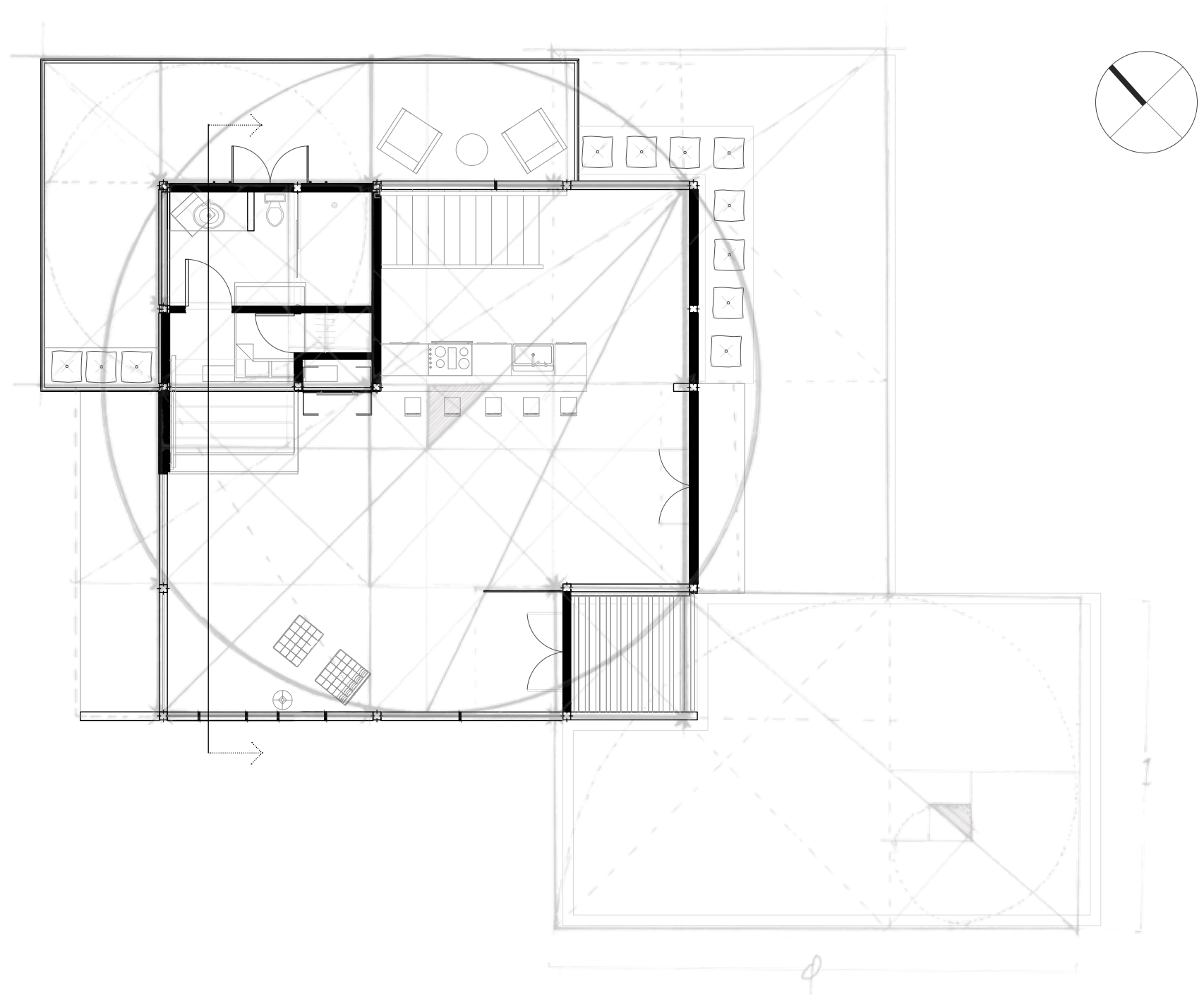
**“ Genius is personal, decided by fate, but it expresses itself by means of system.
There is no work of art without system ”** - Le Corbusier

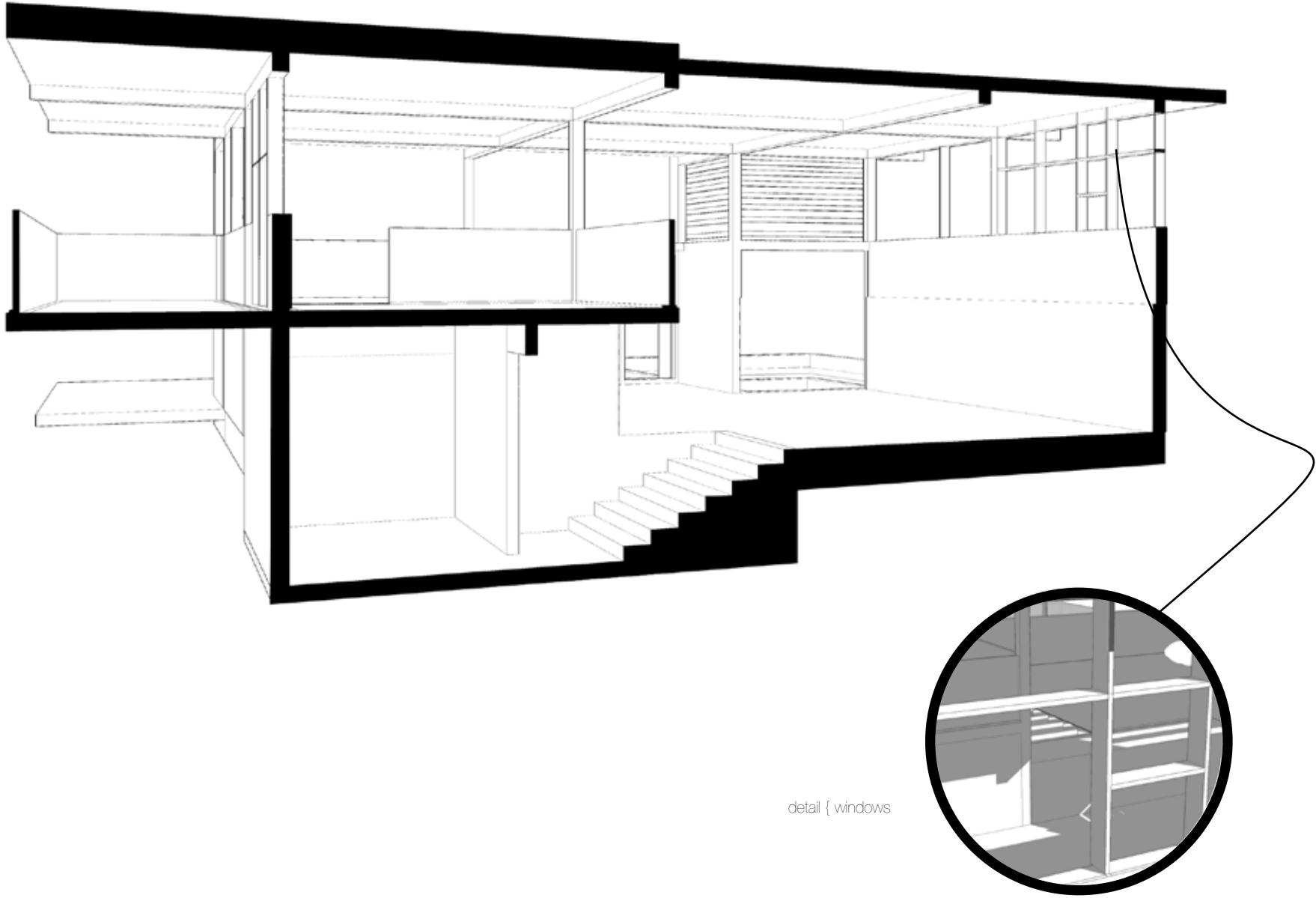
pool house



0, 1, 1, 2, 3, 5, 8, 13, 21, 34, 55





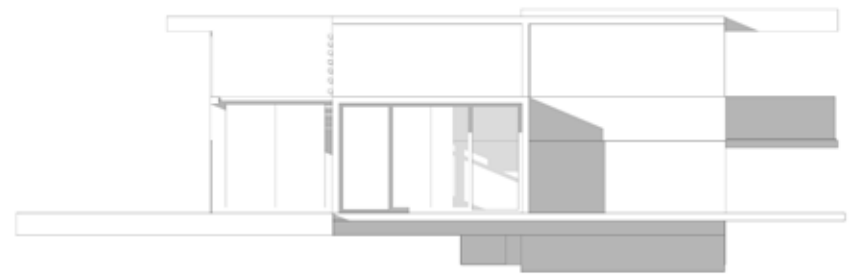


detail { windows

[exterior elevations]



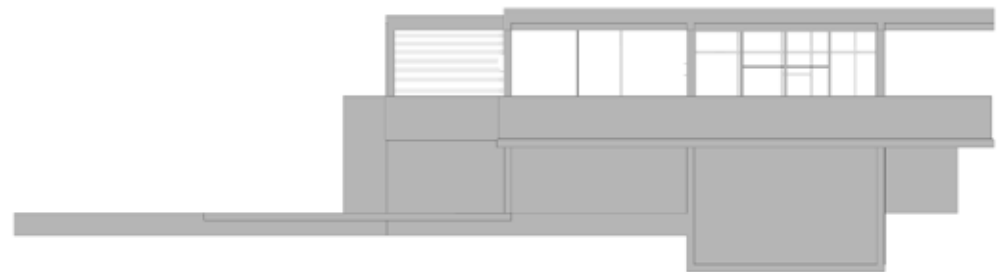
south west



south east



north west



north east

0.3



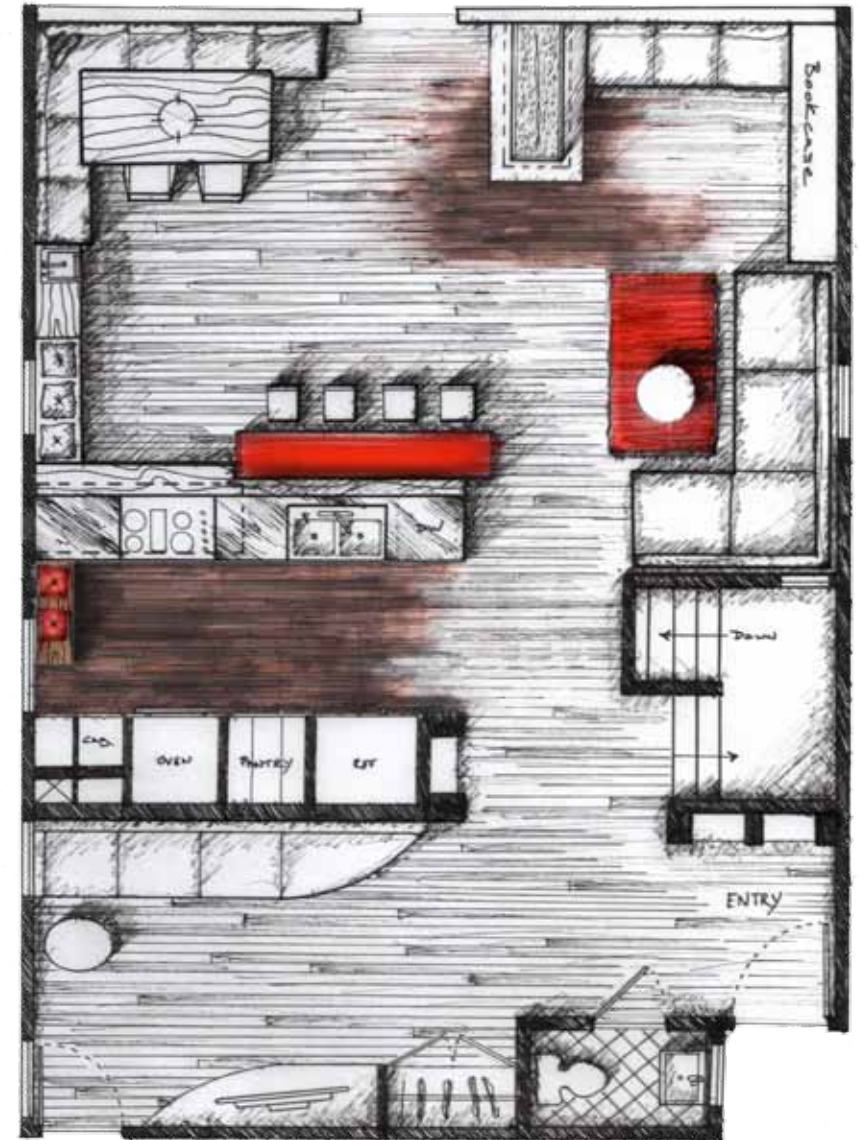
program

The current space was not meeting the clients needs and wants. They wanted the space as an urban retreat to relax + entertain and wanted the design to match their hip and cultured lives.

design solution

An entrance with a proper greeting was given and the spaces were opened up for interaction. Clean lines mixed with warm colors and textures make this space modern yet inviting.

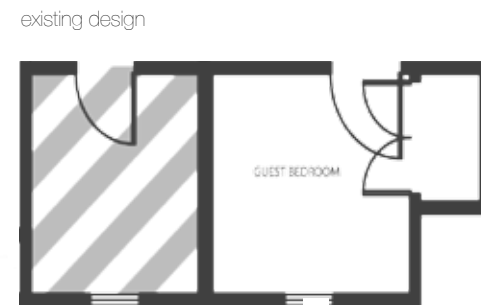
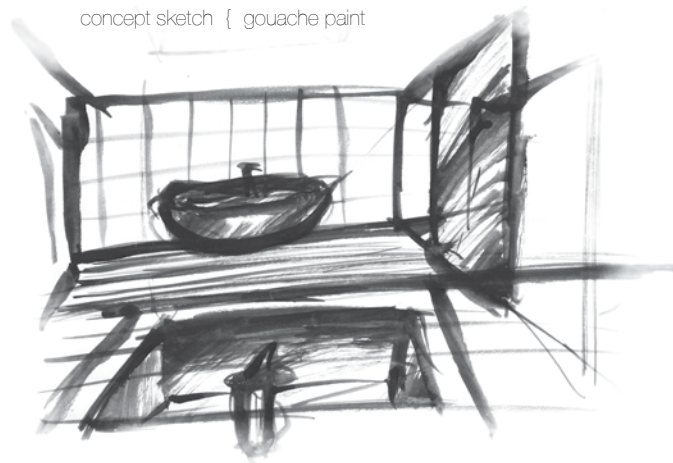
proposed design



“ the space needed a proper greeting. It needed to be functional | it needed to be beautiful ”



0.4



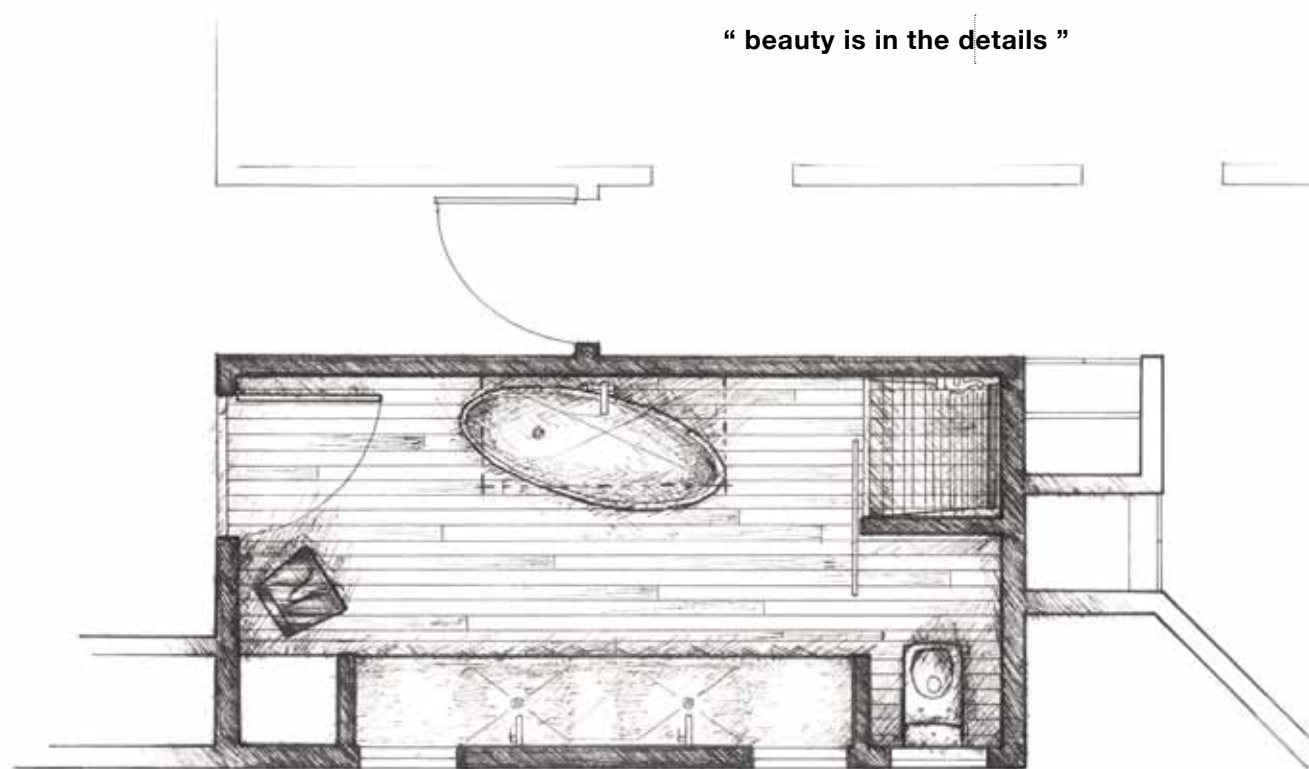
“ beauty is in the details ”

program

To remodel a master bedroom in a residence displaying my design language.

design solution

Keeping simplicity in mind, attention was placed on the details of this project to create a greater sense of luxury.



proposed design



0.5

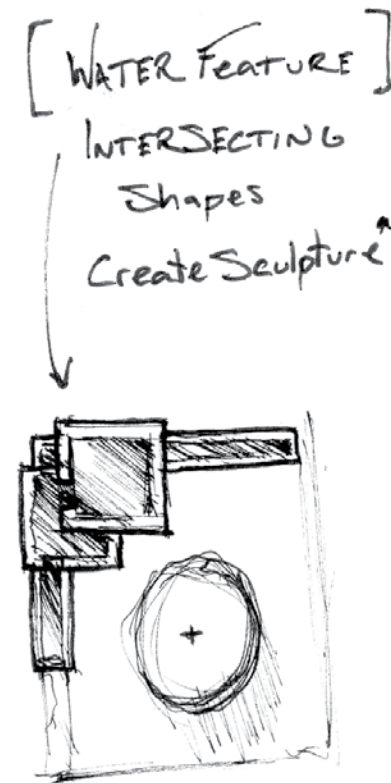
“ clean contemporary lines give this space a the modern look the client was interested in ”

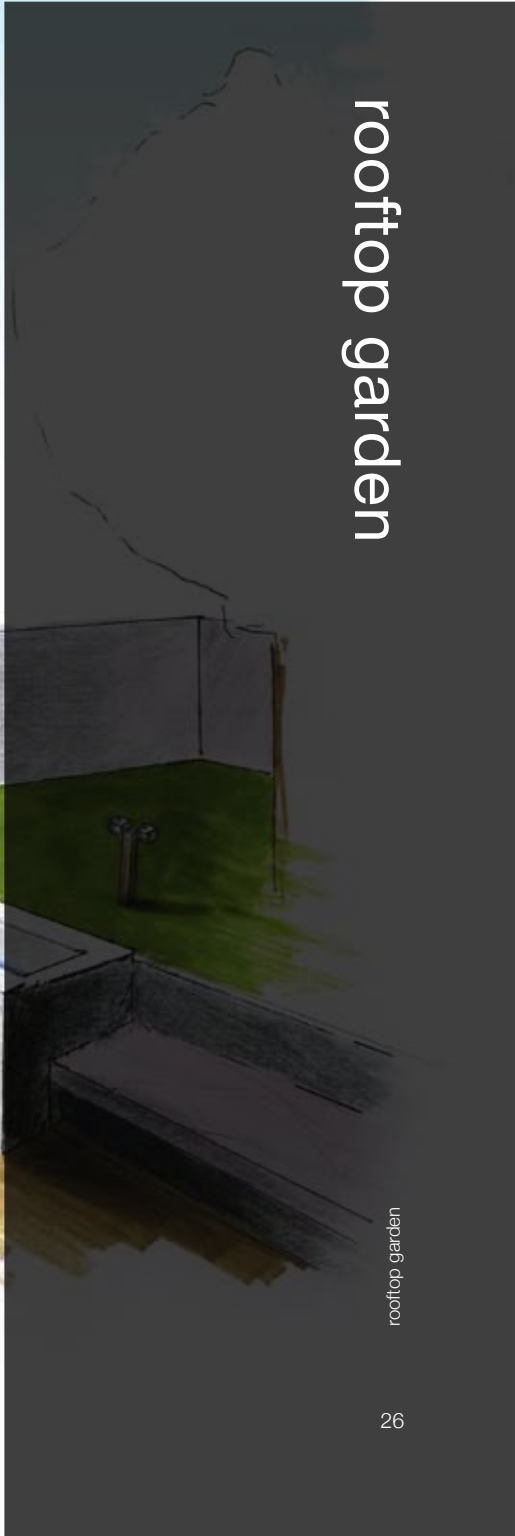
program

The client wanted a rooftop deck + garden for relaxing and entertaining. He wanted a solution that matched his youth while incorporating his Japanese heritage.

design solution

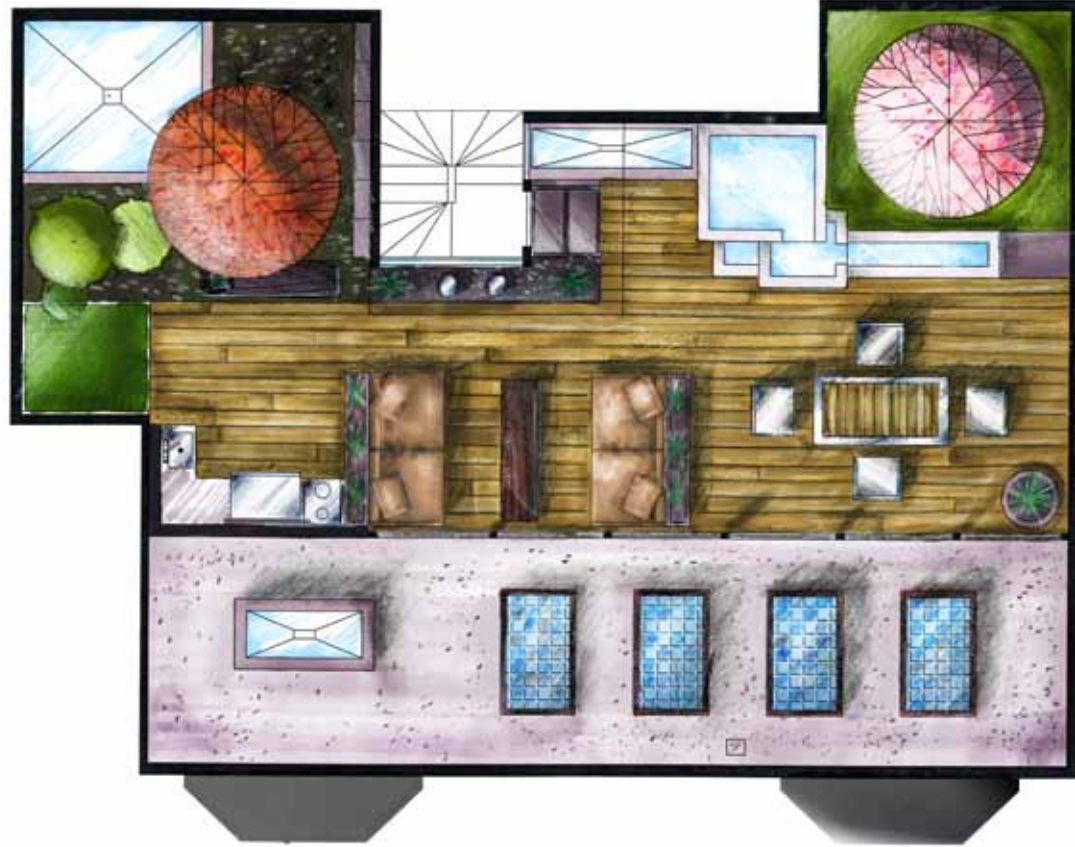
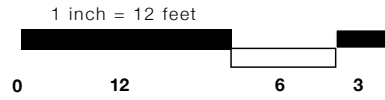
An overall modern composition with strong defined lines complimenting Japanese inspired landscaping create a dynamic yet relaxing space.





rooftop garden

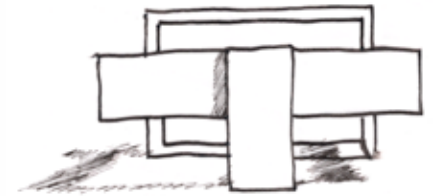
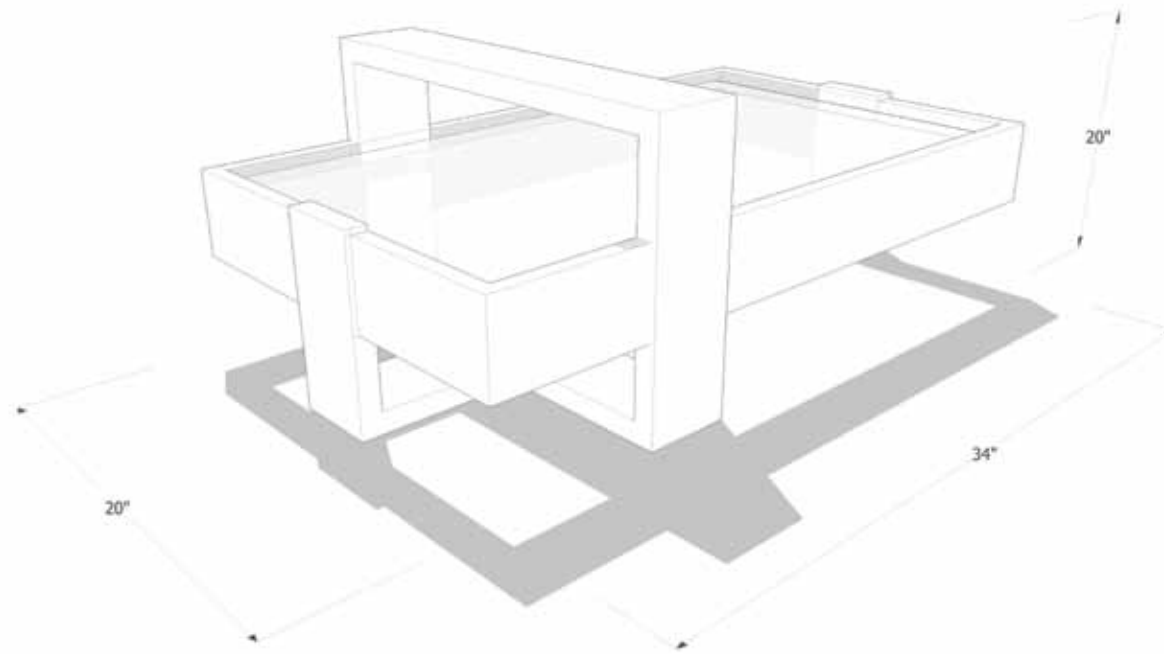
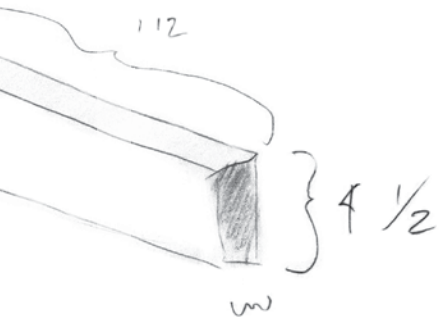
“ the use of cherry blossom and Japanese maple trees allude to eastern culture and serenity ”



rooftop floor plan { marker + color pencil mixed media

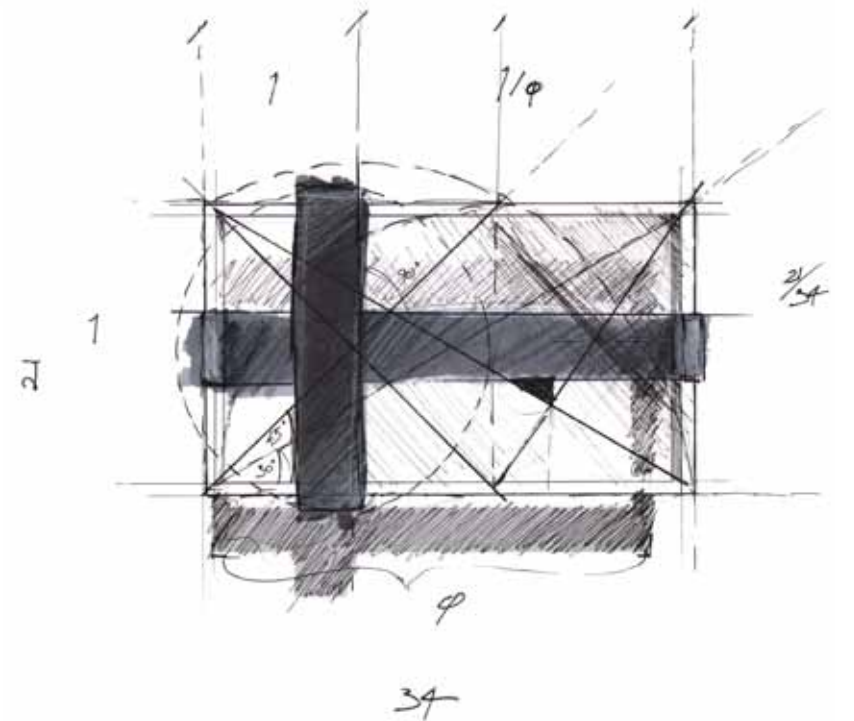
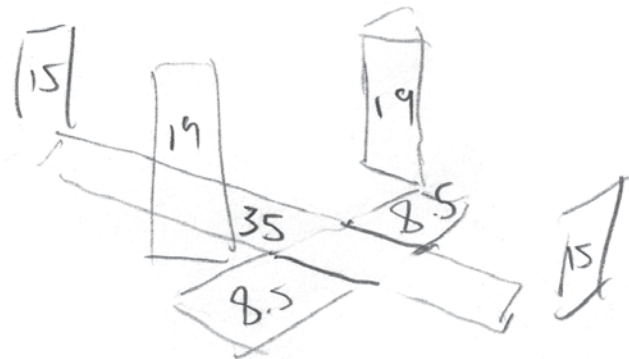


0.6



intersecting shapes

Using proportion as a vehicle for harmony, this table is an exploration of shape and form.



“ the implied shapes and their interactions make this piece what it is ”



coffee table { glass + pine + oak wood hand [natural finish]



mixed media

Traditional mixed media is my preferred method of formally conveying ideas in a clear artistic manner.

luxury hotel suite { watercolor + color pencil + pastels on cotton cold press watercolor paper
[perspective by: John Stephen Hoffpaur]



Westfield mall { marker + color pencil + ink mixed media on marker rag paper

architectural illustration

architectural illustration

0.8

digital media

Ideas are worth telling in many mediums of which are appropriate in different stages of the design process. Digital media has many uses, from map making to simple space studies to finished photorealistic visualization. This is an integral part of my design process.

LC2 loveseat { modeled in 3DS max + V ray





+

+

+

+

+

+

+

+

+

+

+

+

+

+

+

+

+

+

+

+

+

+

+

+

+

+

+

+

+

+

+

+

+

+

+